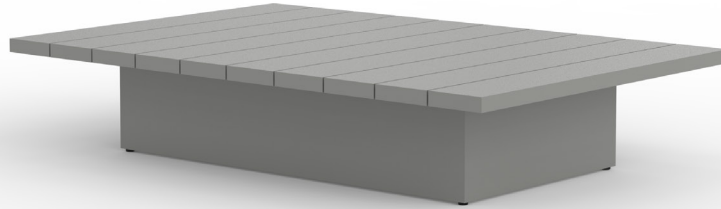


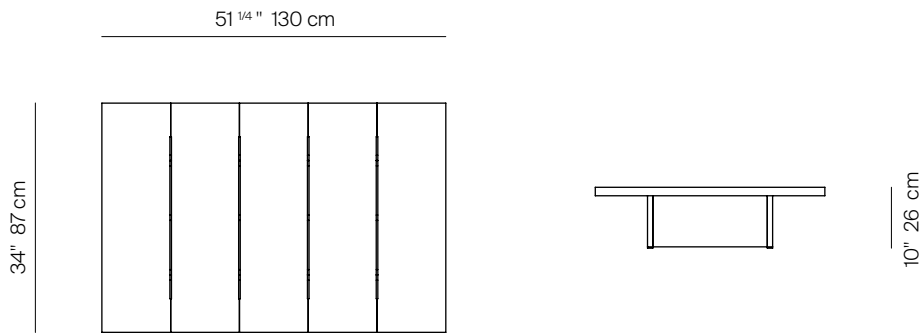
S2

by Ann Vering



RECT COFFEE TABLE 51 X 34" ALUMINIUM

975203



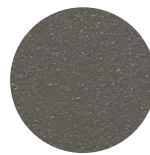
SPECIFICATIONS

Width:	51 1/4"	130 cm
Depth:	34"	87 cm
Height:	10"	26 cm

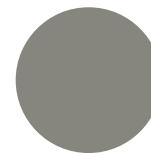
FINISHES



SPACE GREY
-52



MUSCADE
-51



STONE
-43



SHELL
-45



WHITE
-53

MATERIALS

Frame: Powder coated aluminum.

ALUMINIUM

MOQ APPLIED ON CERTAIN FINISHES

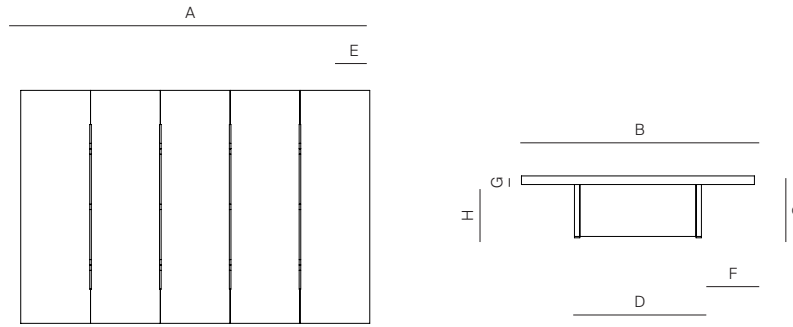
THROW PILLOWS SOLD SEPARATELY

DANAO

danaoliving.com

RECT COFFE TABLE 51 X 34" ALUMINIUM

975203



MEASURES INCH CM	OVERALL LENGTH	OVERALL WIDTH	OVERALL HEIGHT	SIZE OF BASE	OVERHANG AT ENDS	OVERHANG AT SIDES	TABLE TOP THICKNESS	APRON TO FLOOR CLEARANCE	SPACE BETWEEN LEGS AT HEAD	SPACE BETWEEN LEGS AT SIDE	SEAT UP TO
DESCRIPTION	A	B	C	D	E	F	G	H	I	J	K
RECT COFFE TABLE 51 X 34"	51 1/4	34	10	36 1/2	7 3/4	7 3/4	1 1/4	7 1/2	-	-	-
SKU# 975203	130	87	26	93	20	20	3.2	19	-	-	-

MEASURES INCH CM	DIAGONAL CLEARANCE	OVERALL FURNITURE WEIGHT LBS KGS	TOTAL PIECES IN A BOX	BOXED WEIGHT LBS KGS	CUBE
DESCRIPTION	L				
RECT COFFE TABLE 51 X 34"	27 1/2	43.48	1	51.74	14.4
SKU# 975203	70	19.72	1	23.47	

TRHAW PILLOWS SOLD SEPARATELY