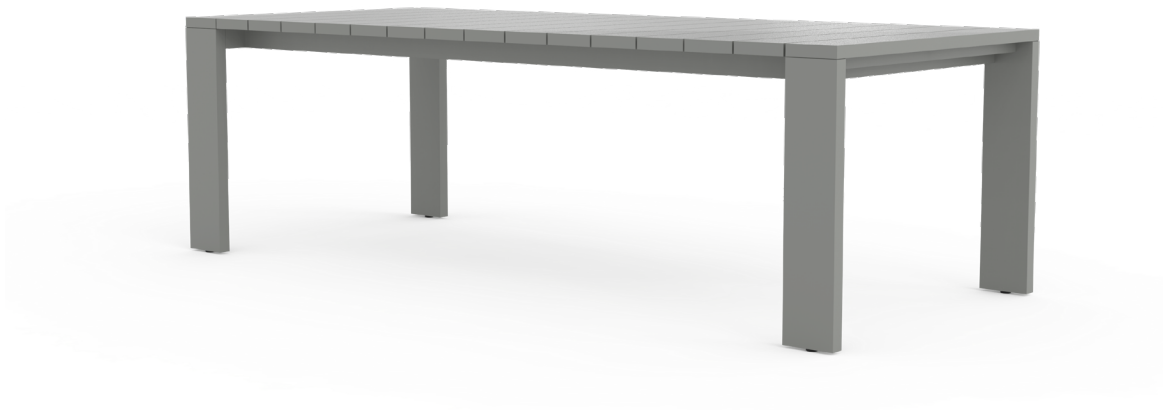


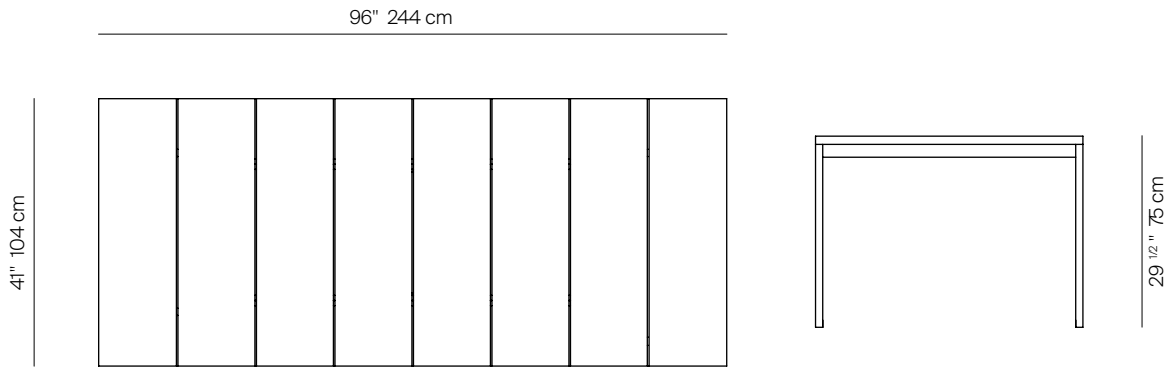
S2

by Ann Vering



RECT DINING TABLE 96 X 41" ALUMINIUM

976217



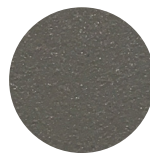
SPECIFICATIONS

Width:	96"	244 cm
Depth:	41"	104 cm
Height:	29 1/2"	75 cm

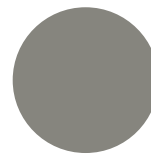
FINISHES



SPACE GREY
-52



MUSCADE
-51



STONE
-43



SHELL
-45



WHITE
-53

MATERIALS

Frame: Powder coated aluminum.

ALUMINIUM

MOQ APPLIED ON CERTAIN FINISHES

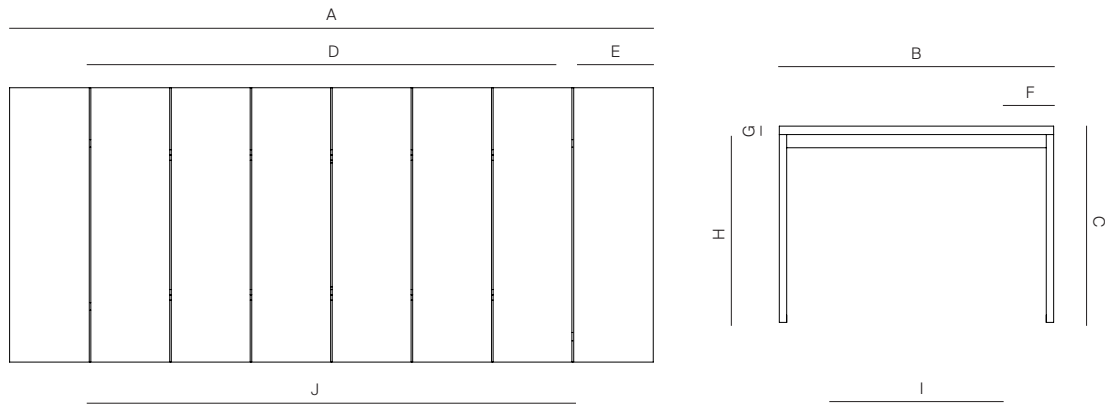
THROW PILLOWS SOLD SEPARATELY

DANAO

danaoliving.com

RECT DINING TABLE 96 X 41" ALUMINIUM

976217



MEASURES INCH CM	OVERALL LENGTH	OVERALL WIDTH	OVERALL HEIGHT	SIZE OF BASE	OVERHANG AT ENDS	OVERHANG AT SIDES	TABLE TOP THICKNESS	APRON TO FLOOR CLEARANCE	SPACE BETWEEN LEGS AT HEAD	SPACE BETWEEN LEGS AT SIDE	SEAT UP TO
DESCRIPTION	A	B	C	D	E	F	G	H	I	J	K
RECT DINING TABLE 96 X 41"	96	41	29 1/2	72	12	7 3/4	1 1/4	24 3/4	23	62	6 TO 8
SKU# 976217	224	104	75	183	30	19.6	3.2	63	58.5	157	6 TO 8

MEASURES INCH CM	DIAGONAL CLEARANCE	OVERALL FURNITURE WEIGHT LBS KGS	TOTAL PIECES IN A BOX	BOXED WEIGHT LBS KGS	CUBE
DESCRIPTION	L				
RECT DINING TABLE 96 X 41"	44 1/2	161.34	1	117.43	30.2
SKU# 976217	113	73.18	1	80.48	

TRHAW PILLOWS SOLD SEPARATELY