

# CHELSEA

by Mario Ruiz



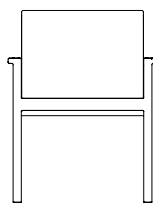
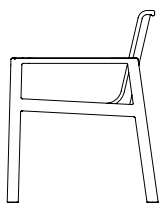
DINING ARMCHAIR

075.2101

23 <sup>3</sup>/<sub>4</sub>" 60.2cm  
17 <sup>1</sup>/<sub>4</sub>" 43.5cm

24 <sup>1</sup>/<sub>4</sub>" 61.7cm  
20" 50.5 cm

17" 43.4cm



23 <sup>3</sup>/<sub>4</sub>" 60.2cm  
31 <sup>1</sup>/<sub>2</sub>" 79.9cm

## SPECIFICATIONS

Width:	24 1/4"	61.7 cm
Depth:	23 3/4"	60.2 cm
Height:	31 1/2"	79.9 cm
Seat height:	17"	43.4cm

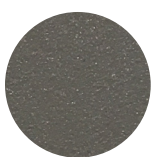
## FINISHES



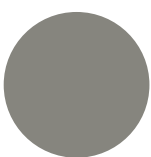
NATURAL  
-20



SPACE GREY  
-52



MUSCADE  
-51



STONE  
-43



SHELL  
-45



WHITE  
-53

## MATERIALS

Frame: Powder coated aluminum.

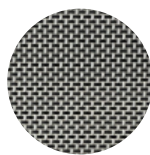
Accents: Batyline.

Furniture Cover Available.

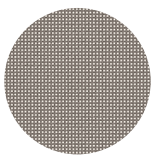
## TEAK

## ALUMINUM

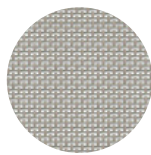
## MOQ APPLIED ON CERTAIN FINISHES



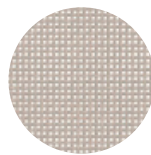
SILVER  
-30



TAUPE  
-33



PUMICE  
-34



SAND  
-35



WHITE  
-32

## BATYLINE

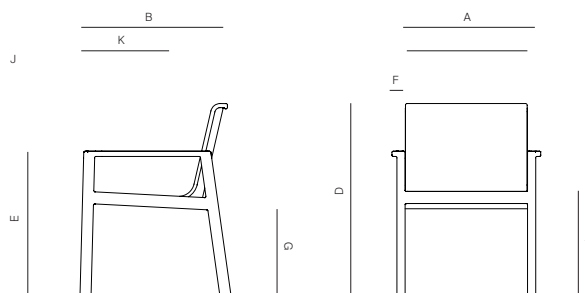
TRHROW PILLOWS SOLD SEPARATELY

# DANAO

danaoliving.com

DINING ARM CHAIR

075.2101



MEASURES INCH CM	OVERALL WIDTH	OVERALL DEPTH	OVERALL HEIGHT WITH CUSHIONS	OVERALL FRAME HEIGHT	ARM HEIGHT	ARM WIDTH	FOOT HEIGHT	SEAT HEIGHT WITH CUSHIONS	FRAME SEAT HEIGHT (FLOOR TO FRAME)	INSIDE SEAT WIDTH	INSIDE SEAT DEPTH
DESCRIPTION	A	B	C	D	E	F	G	H	I	J	K
DINING ARM CHAIR	24 1/4	23 3/4	-	31 1/2	23 3/4	2 1/4		-	17	20	17 1/4
SKU# 075.2101	61.7	60.2	-	79.9	60.2	5.4	31.5	-	43.4	50.5	43.5

MEASURES INCH CM	# OF BACK CUSHIONS	# OF SEAT CUSHIONS	COM YARDS METERS	DIAGONAL CLEARANCE	FURNITURE WEIGHT LBS KGS	TOTAL PIECES IN A BOX	BOXED WEIGHT LBS KGS	CUBE
DESCRIPTION								
DINING ARM CHAIR	-	-	-	33 1/2	21.08	1	40.76	15.3
SKU# 075.2101	-	-	-	85	9.56	1	18.49	

TRH OW PILLOWS SOLD SEPARATELY