

# CHELSEA

by Mario Ruiz

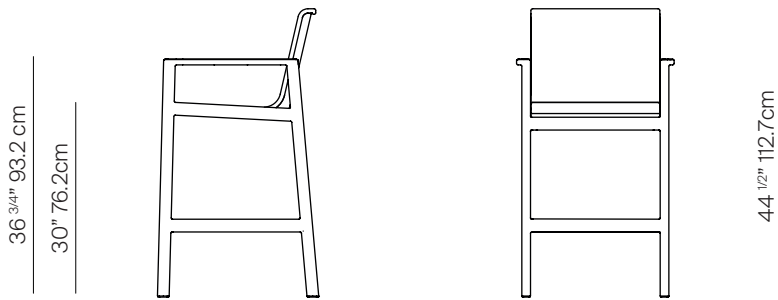


## BARSTOOL

075.8441

23 1/2" 59.7cm  
17 1/4" 43.5cm

24 1/4" 61.7cm  
20" 50.6cm



## SPECIFICATIONS

Width:	24 1/4"	61.7 cm
Depth:	23 1/2"	59.7 cm
Height:	44 1/2"	112.7 cm
Seat height:	30"	76.2cm

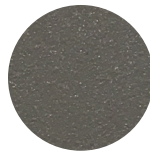
## FINISHES



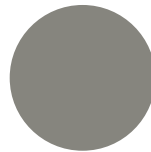
NATURAL  
-20



SPACE GREY  
-52



MUSCADE  
-51



STONE  
-43



SHELL  
-45



WHITE  
-53

## MATERIALS

Frame: Powder coated aluminum.

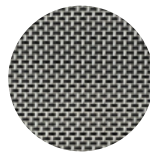
Accents: Batyline.

Furniture Cover Available.

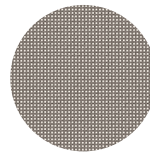
## TEAK

## ALUMINUM

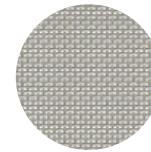
## MOQ APPLIED ON CERTAIN FINISHES



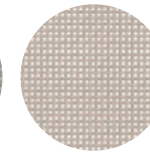
SILVER  
-30



TAUPE  
-33



PUMICE  
-34



SAND  
-35



WHITE  
-32

## BATYLINE

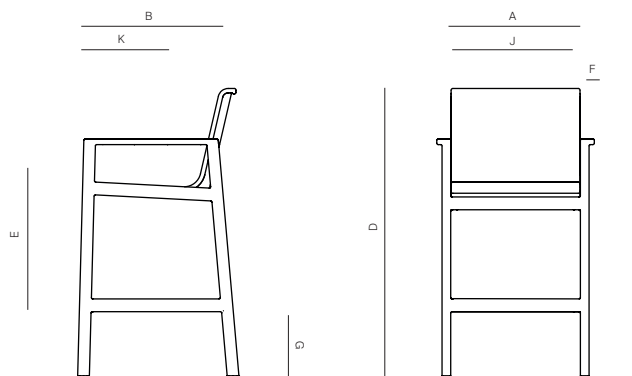
TRHROW PILLOWS SOLD SEPARATELY

# DANAO

[danaoliving.com](http://danaoliving.com)

BARSTOOL

075.8441



MEASURES INCH CM	OVERALL WIDTH	OVERALL DEPTH	OVERALL HEIGHT WITH CUSHIONS	OVERALL FRAME HEIGHT	ARM HEIGHT	ARM WIDTH	FOOT HEIGHT	SEAT HEIGHT WITH CUSHIONS	FRAME SEAT HEIGHT (FLOOR TO FRAME)	INSIDE SEAT WIDTH	INSIDE SEAT DEPTH
DESCRIPTION	A	B	C	D	E	F	G	H	I	J	K
BARSTOOL	24 1/4	23 1/2	-	44 1/2	36	2 1/4	10	-	30	20	17 1/4
SKU# 075.8441	61,7	59,7	-	112,7	93,2	5,4	25,4	-	76,2	50,6	43,5

MEASURES INCH CM	# OF BACK CUSHIONS	# OF SEAT CUSHIONS	COM YARDS METERS	DIAGONAL CLEARANCE	FURNITURE WEIGHT LBS KGS	TOTAL PIECES IN A BOX	BOXED WEIGHT LBS KGS	CUBE
DESCRIPTION								
BARSTOOL	-	-	-	43 1/2	26.50	1	43.56	20.66
SKU# 075.8441	-	-	-	110,5	12,02	1	19,76	

TRH OW PILLOWS SOLD SEPARATELY